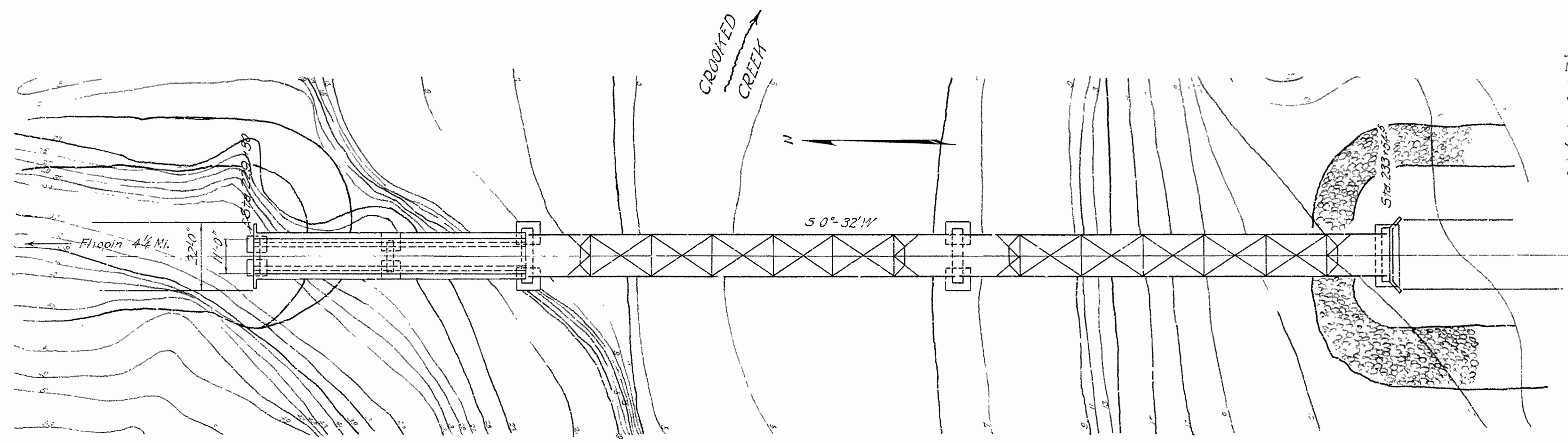


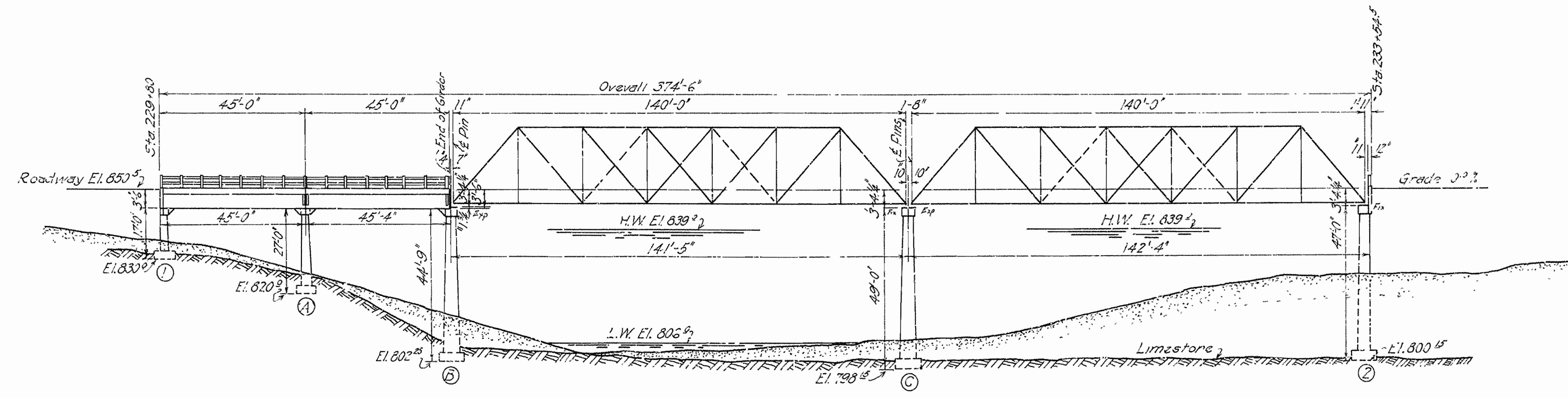
FED. ROAD DIST.	STATE	FED. AID PROJ. NO.	FIG. NO.	SHEET NO.	TOTAL SHEETS
6	AR		4	13	



PLAN

Quantities

Excavation	235	cu yd
MC	135	cu yd
Rock	50	cu yd
Class A Concrete	26,152	sq ft
Class S	138	sq ft
Reinforcing Steel	38,290	lb
Struct. rel. Steel	17,428	lb
Rebar 1" thick	220	sq yd
Concrete Retng	199	sq ft



B.M. - E1.619.13 26' W. Oak
24' Left Sta. 330+20

Drainage Area
90 sq. mi. Hills

GENERAL ELEVATION
For Details see Drawings
No. 405, 406 & 407
Revision
Drawings No. 528, 530
Scale 1"=20'

LAYOUT AND QUANTITIES
BRIDGE OVER CROOKED CREEK
4 1/4 M. South of Flippin Marion Co.
Route 101 Section 2
ARKANSAS STATE HIGHWAY DEPARTMENT
LITTLE ROCK

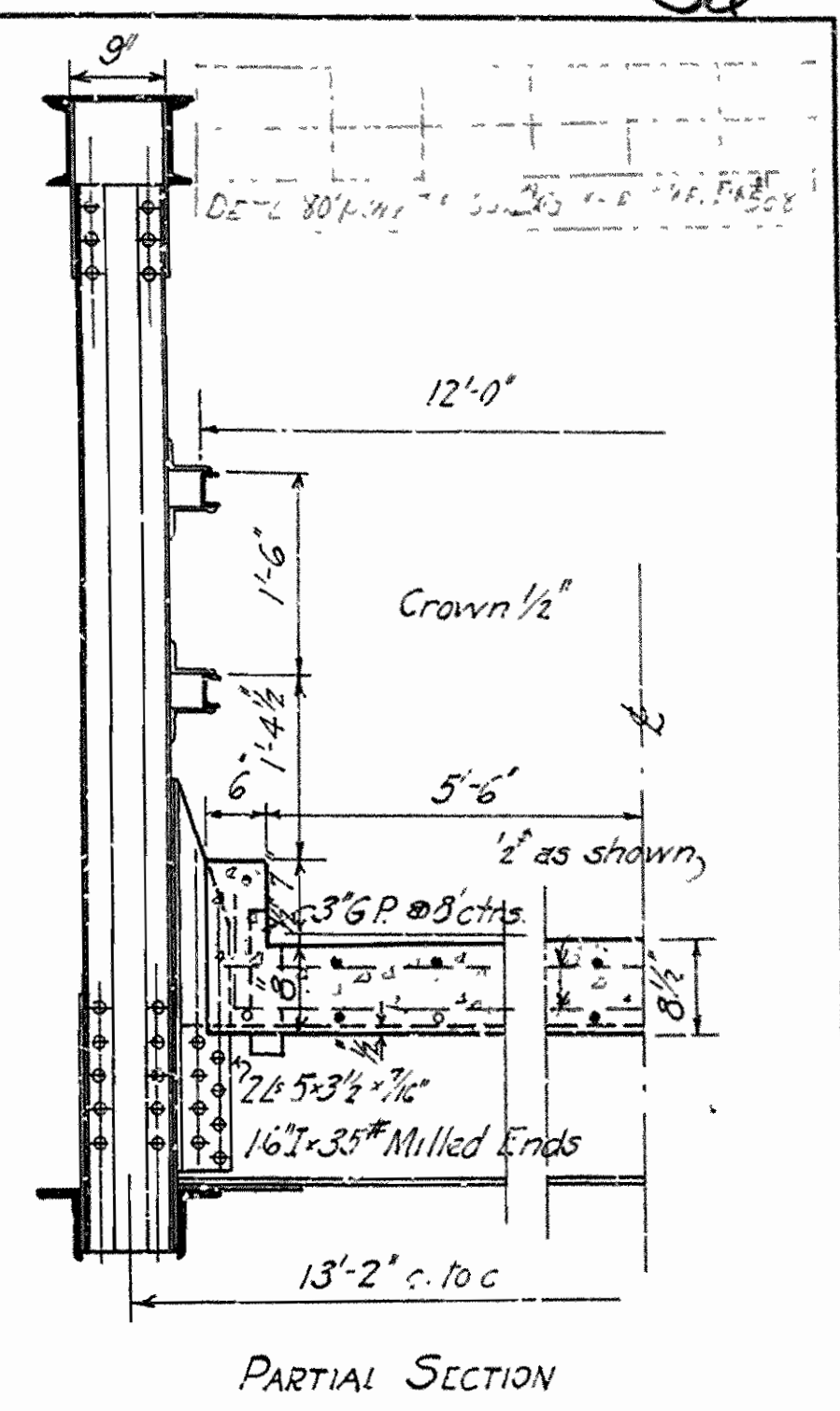
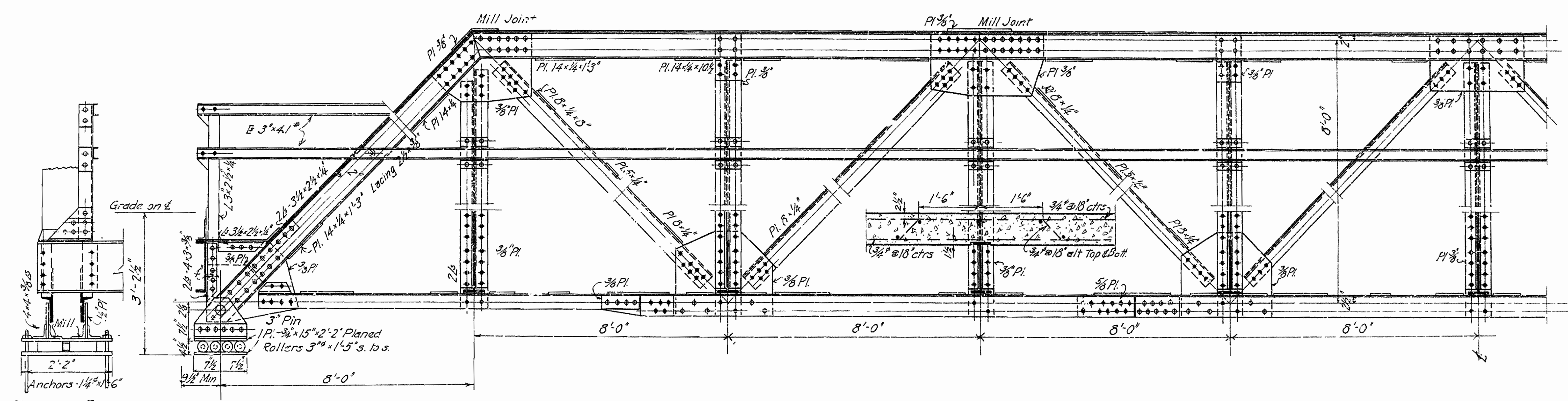
N.B. Garvin
Bridge Engineer

Designed By S.J.R. Date 2-27
Traced By Date " Scale 1"=20'
Checked By Date

Revised 12/24/27 S.A.J.

Bridge No. 477

Drawing No. 424



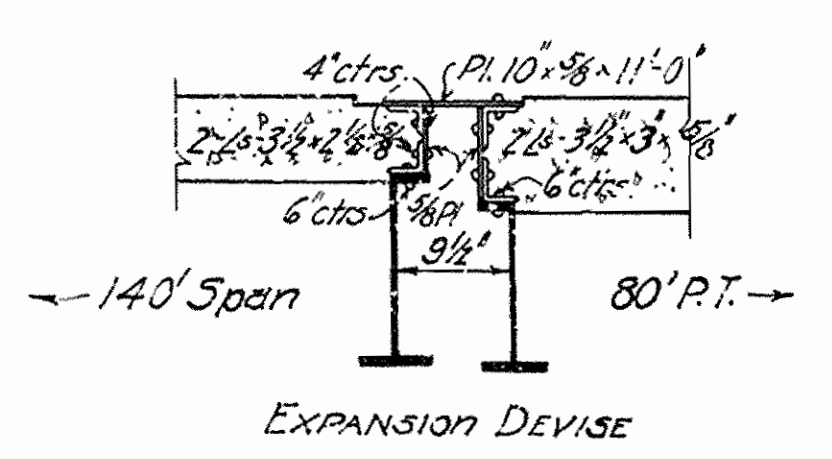
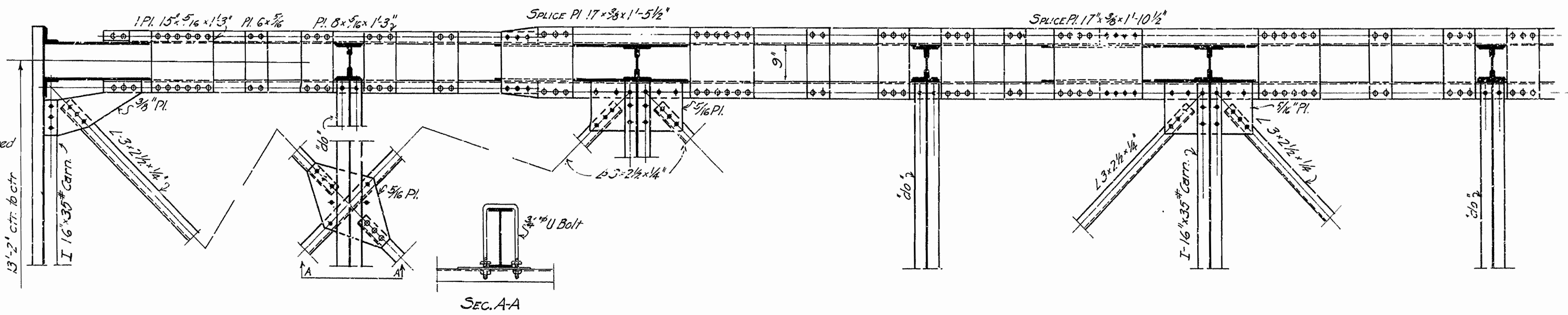
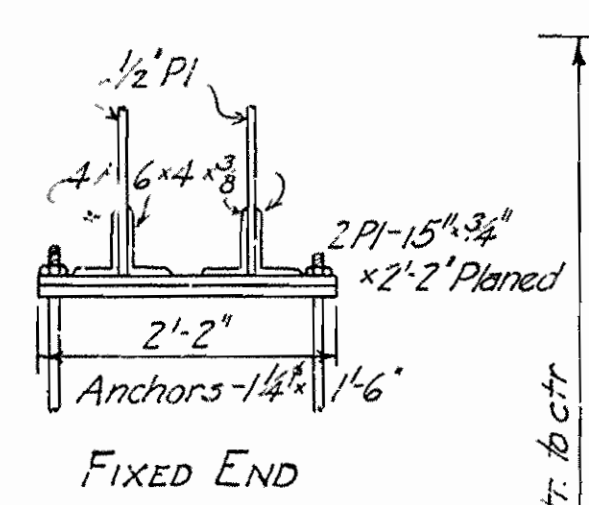
SPECIFICATIONS

LIVE LOAD - Uniform = 88# per sq. ft. of roadway. Concentrated = 1-10 Ton Truck as shown.
 Impact = $\frac{100}{L+300}$
 Axle Loads $\frac{10000}{16'}$ $\frac{16000}{6'}$

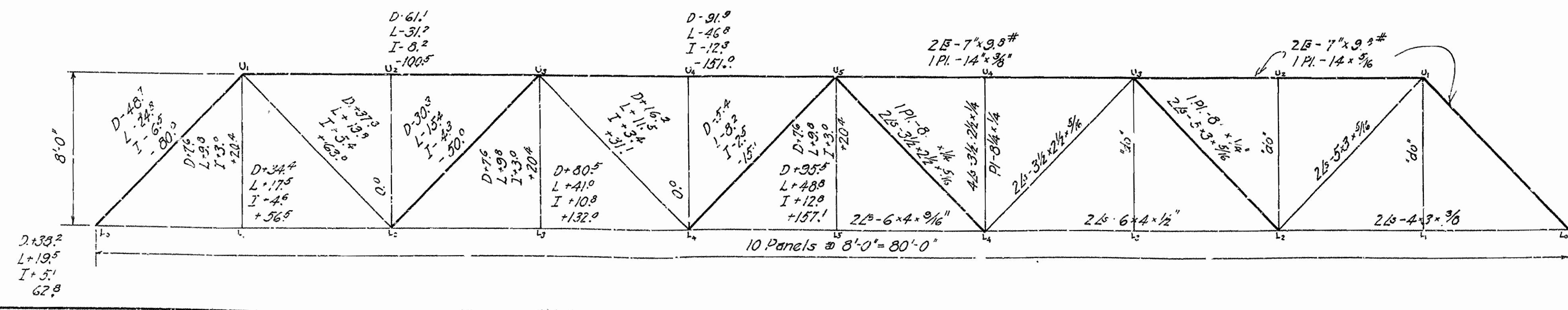
Unit Stresses: See Arkansas Highway Department Specifications 5/30/12
 Rivets = 3/4" diam.
 Open Holes: Rivet holes in main members punch 3/16" smaller than rivet. During shop assembly, ream to 1/16" larger than rivet. All field connections riveted. Rivet holes in tension members so spaced that one hole only is deducted at point of maximum stress.
 Shop Paint: One coat red lead and raw linseed oil.
 Field Paint: Two coats of different colors as approved by the Engineer.
 Batten Plates: Spaced not over 3'-0" centers on tension members.
 Floor Beams shall be full length with ends milled.
 Concrete: Floor Six Class 'S'. 1" extra has been added for wear.

Floor Beams

D.L.M. = $12/8 \times 1000 \times 13^2 = 253,000$
 L.L.M. = $16000 \times 5/13 \times 5 \times 12 = 378,000$
 Impact = 30% = 113,000
 Total = 744,000
 $S = 744000/16000 = 46.5$ Sec. Mod. Rqd
 Use 16" x 35" I Carn. = 54!



This drawing is general. Shop drawings must be approved.

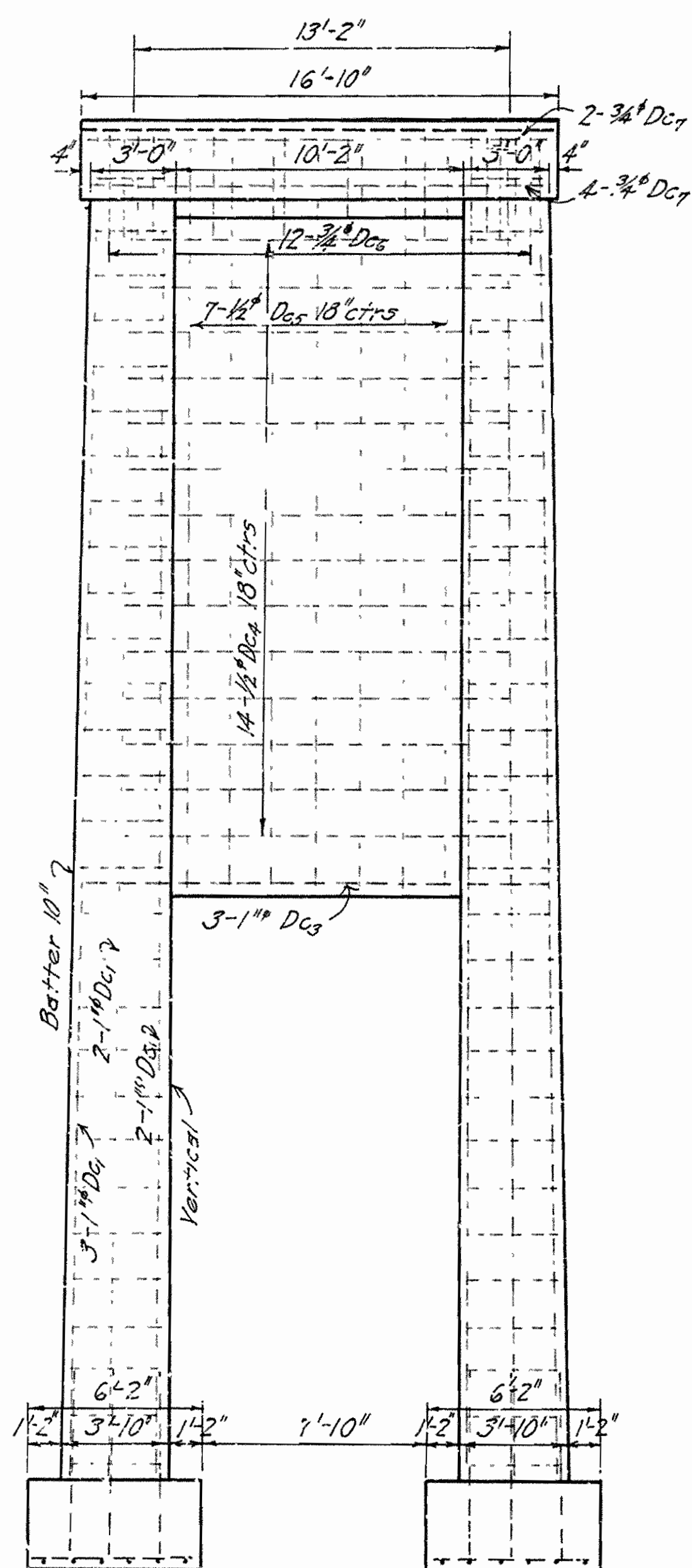
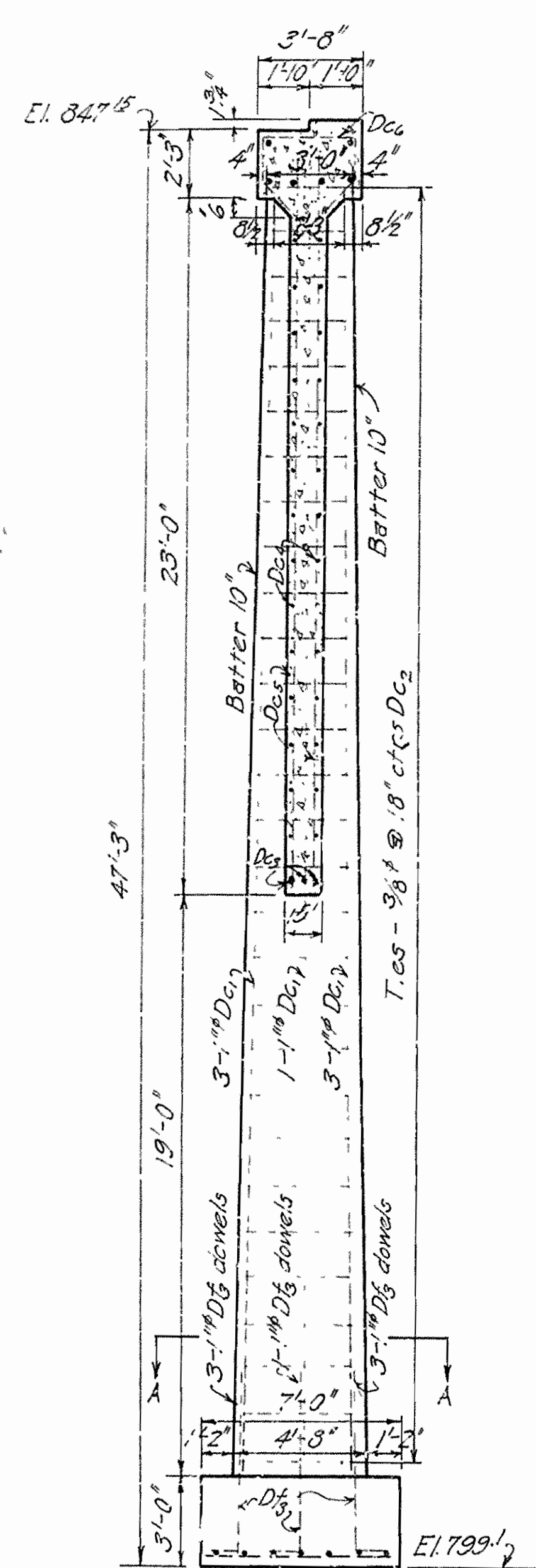


QUANTITIES
 Rein. Steel 430#
 Str. Steel 33000
 C.I. Con. (81'6") 26.5 yds

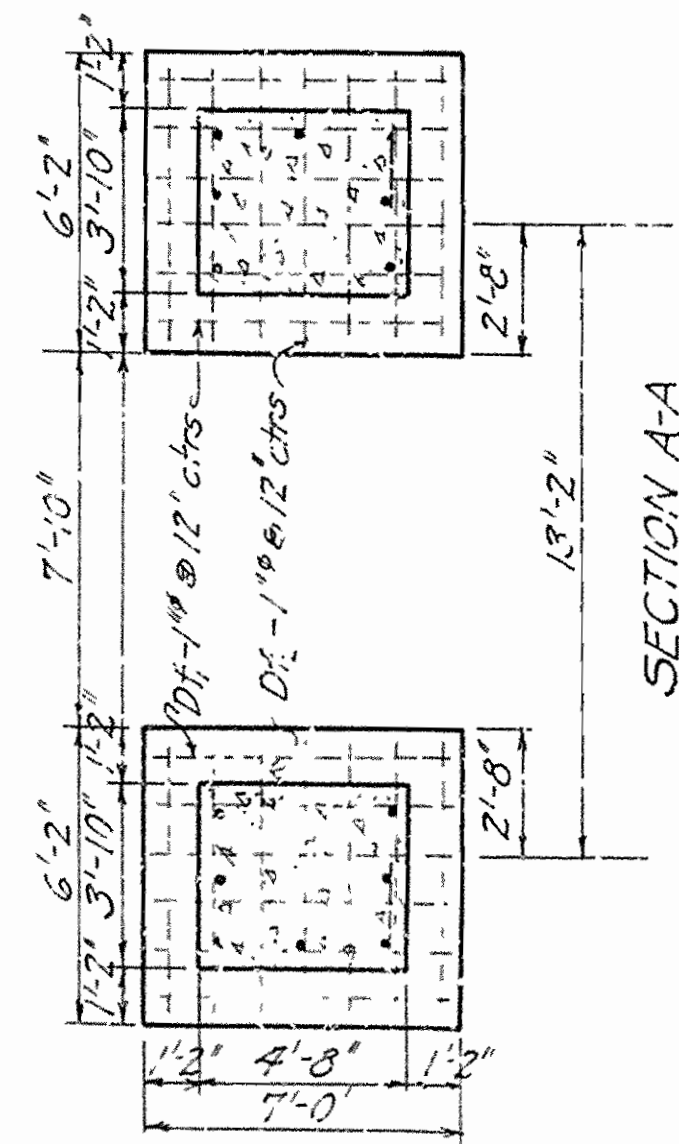
N.B. Garver
 Bridge Engineer

DETAILS OF
 80'-0" PONY TRUSS
 BRIDGE OVER CROOKED CREEK
 1/4 Mi. So. of Fippin Marion Co.
 Route 101 - Section 2
 ARKANSAS HIGHWAY DEPARTMENT
 LITTLE ROCK, ARK.

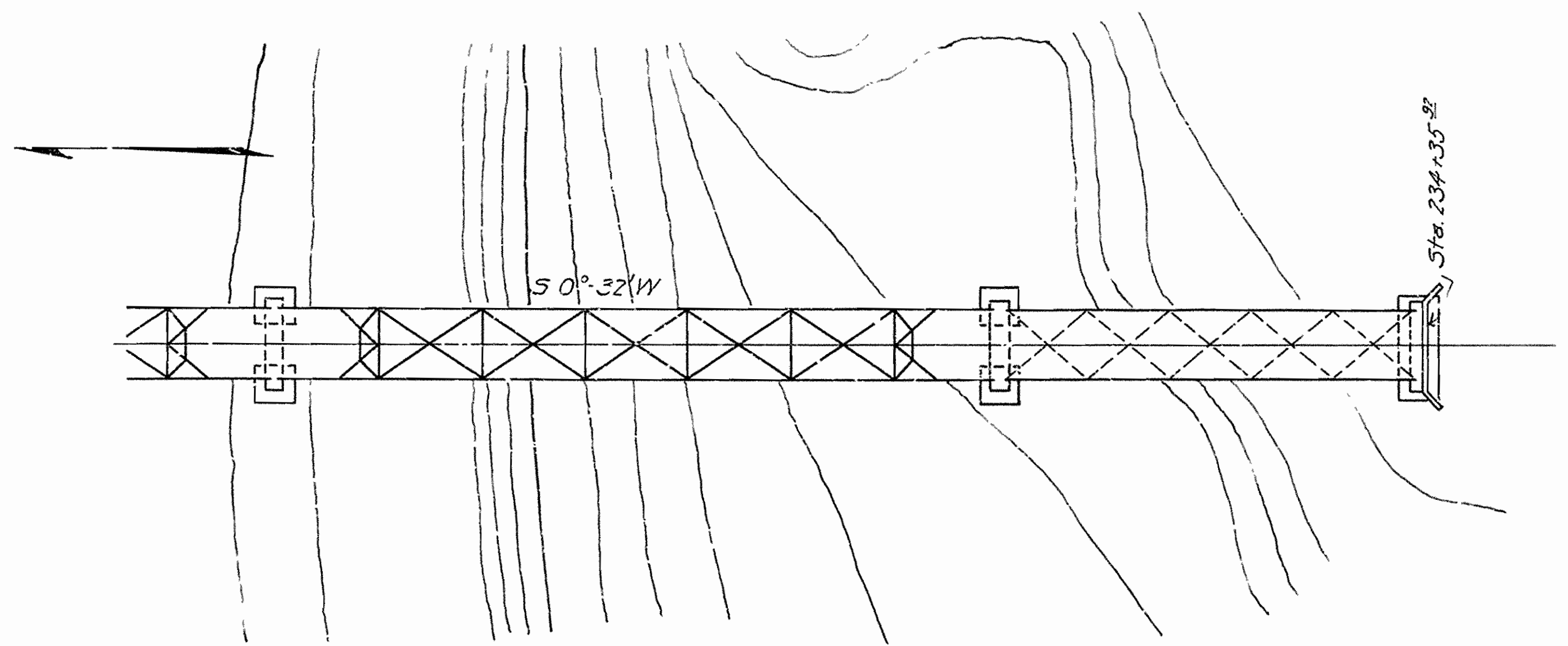
Designed By N.B.G.
 Traced By
 Checked By
 Bridge 477 Scale 3/4" = 1'-0"
 Drawing 508



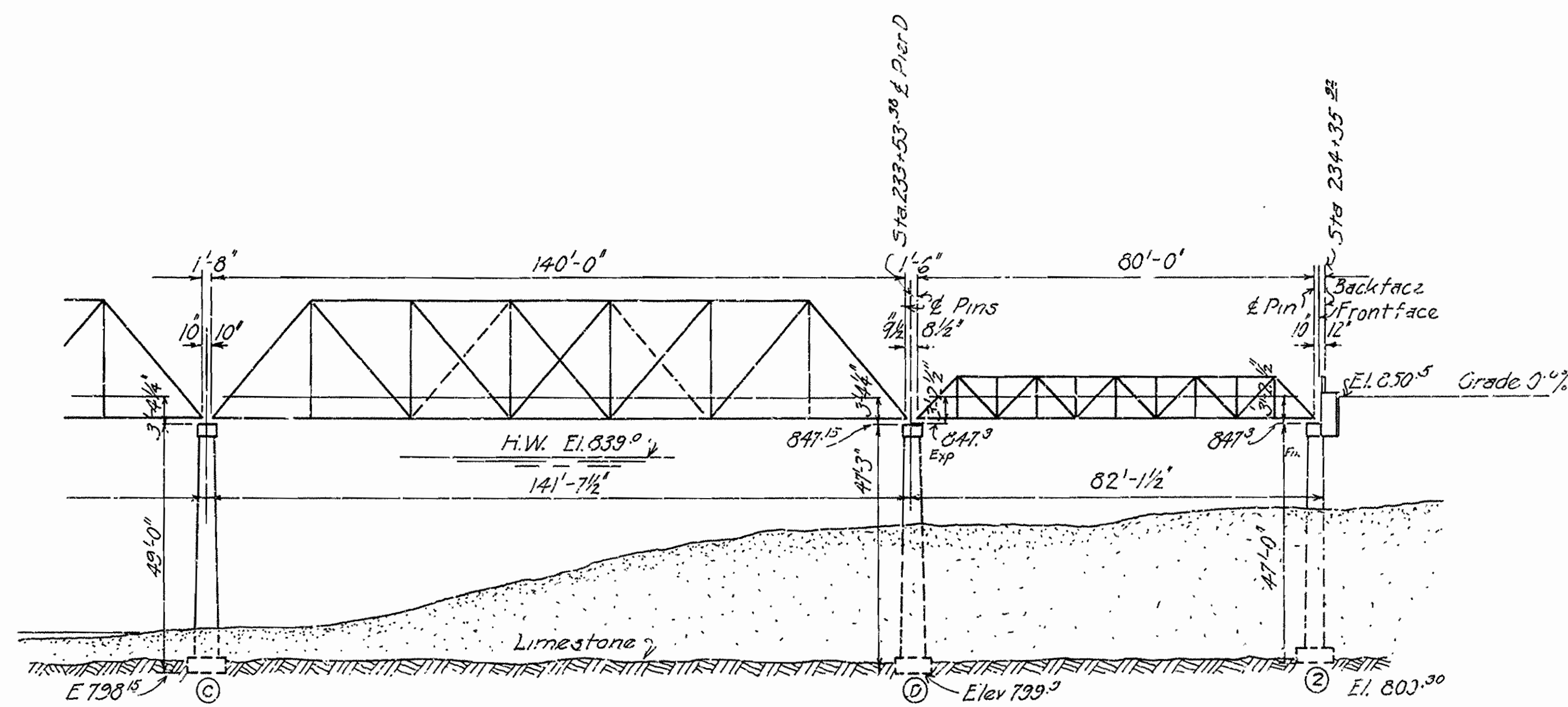
PIER D



SECTION A-A



PLAN



GENERAL ELEVATION

For Details of Revision See Drawing No. 508

NOTE:-
 This sheet shows relation of revision at south end to the original layout on drawing 404. An 80' span has been added-Abutment 2 has been moved back-Pier D has been added. Details of the Abutment remain the same except above Bridge seat.

Added Quantities

No.13 Dry Excavation	160 yds
No.13 We-	80 "
No.54 C.I.A Concrete	46 "
No.54 C.I.S	26 "
No.55 Reinforcing S-cc	8000 lb
No.56 Structural	33000 "

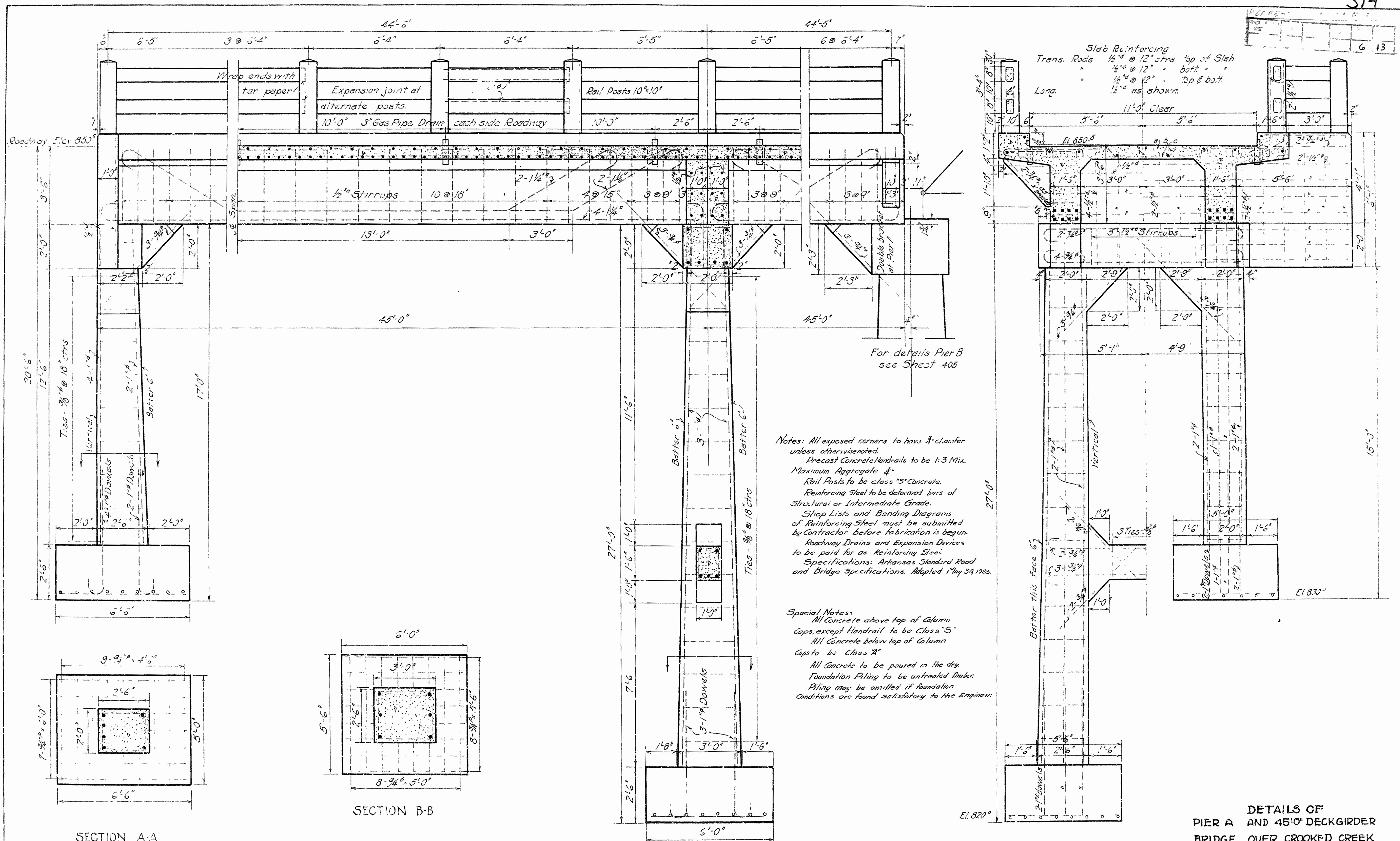
Excavation has been changed for new location Abutment 2. No deduction of quantities of excavation for difference between Abutment 2 & Pier D.

REVISION FOR SOUTH END
 BRIDGE OVER CROOKED CREEK
 1/4 Mi So. Flippin Marion Co.
 Route 10' Sec 2
 ARKANSAS STATE HIGHWAY DEPARTMENT
 LITTLE ROCK ARK

N.B. Garner
 Bridge Engineer

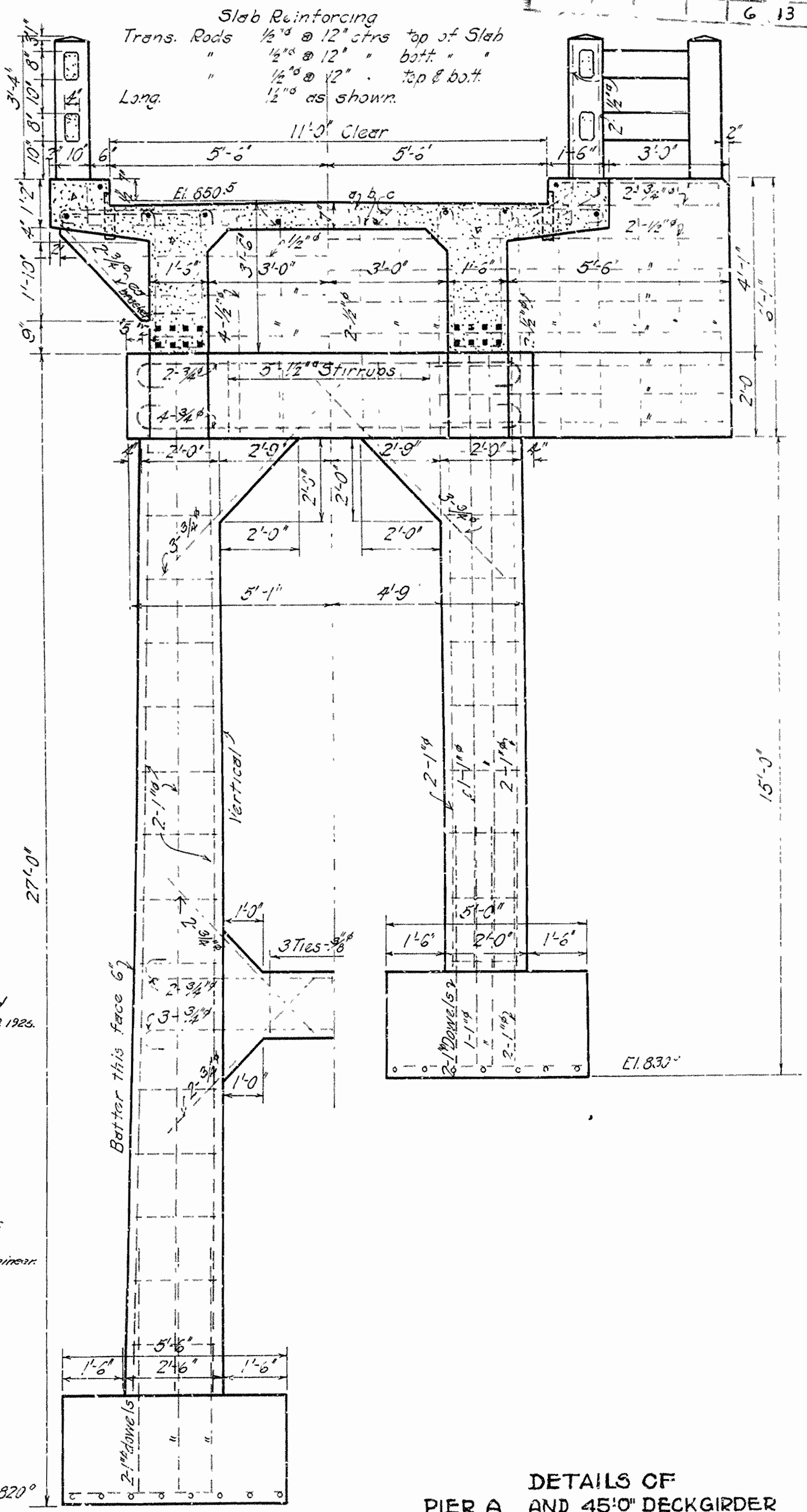
Designed By
 Traced By
 Checked By
 Bridge No. 477

Scale 1" = 20'
 Drawing No. 510



Notes: All exposed corners to have $\frac{3}{4}$ " chamfer unless otherwise noted.
 Precast Concrete Handrails to be 1:3 Mix.
 Maximum Aggregate $\frac{1}{2}$ "
 Rail Posts to be class "S" Concrete.
 Reinforcing Steel to be deformed bars of Structural or Intermediate Grade.
 Shop Lists and Bending Diagrams of Reinforcing Steel must be submitted by Contractor before fabrication is begun.
 Roadway Drains and Expansion Devices to be paid for as Reinforcing Steel.
 Specifications: Arkansas Standard Road and Bridge Specifications, Adopted May 30, 1925.

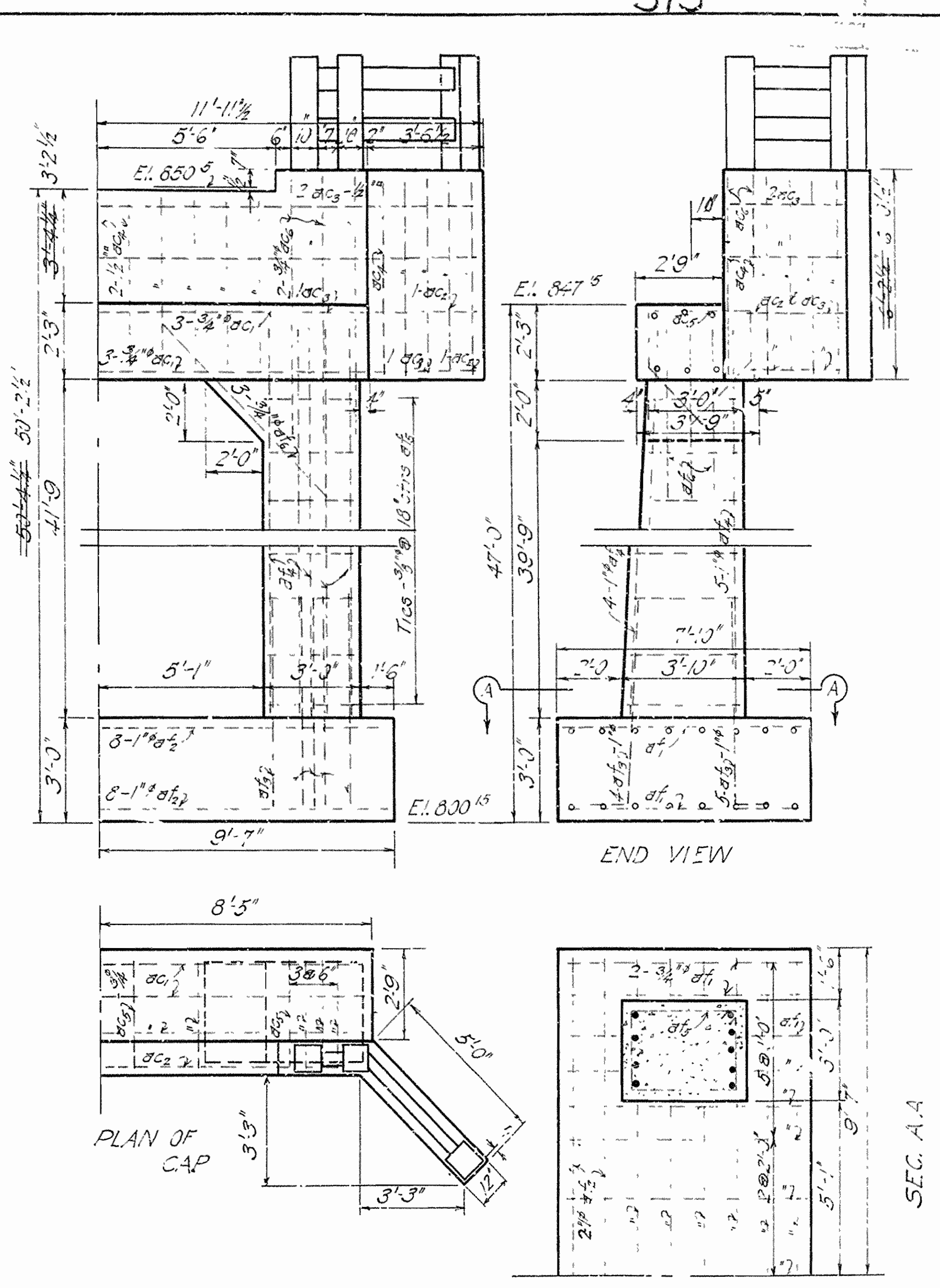
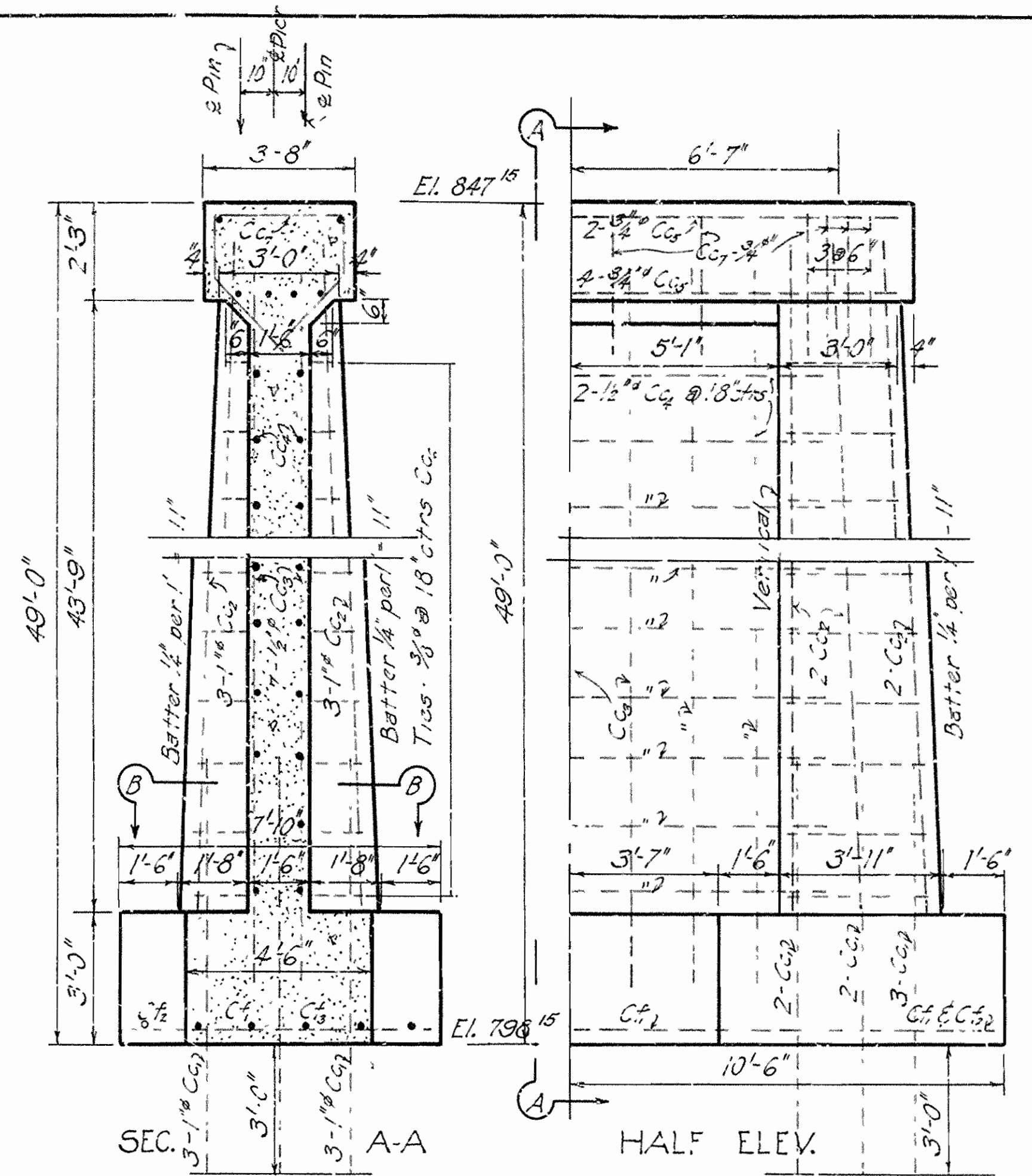
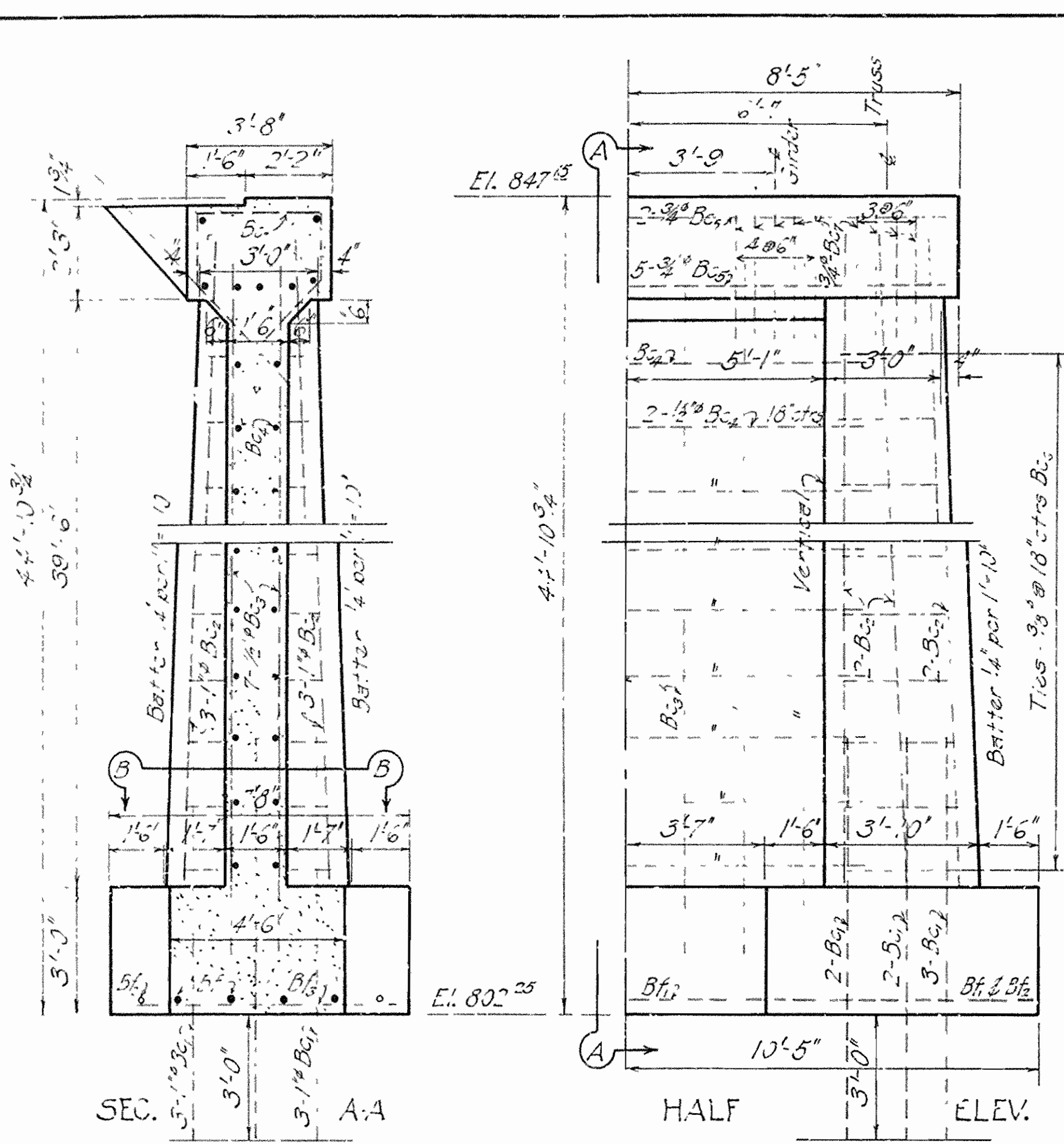
Special Notes:
 All Concrete above top of Column Caps, except Handrail, to be Class "S"
 All Concrete below top of Column Caps to be Class "A"
 All Concrete to be poured in the dry.
 Foundation Piling to be untreated Timber.
 Piling may be omitted if foundation conditions are found satisfactory to the Engineer.



DETAILS OF
 PIER A AND 45'0" DECK GIRDER
 BRIDGE OVER CROOKED CREEK
 4 1/2 MILES SOUTH OF FLIPPIN-MARION CO.
 RT. #01 - SEC. 2
 ARKANSAS STATE HIGHWAY DEPARTMENT
 LITTLE ROCK, ARK.

Designed By: _____ Date: _____ Scale: _____
 Traced By: _____ Date: _____ $\frac{1}{2}$ " = 1'-0"
 Checked By: _____ Date: _____
 Bridge No. 477 Drawing No. 406

N. B. Larson
 Bridge Engineer



DETAILS
PIERS C & B ABUTMENT 2
BRIDGE OVER CROOKED CREEK
4 1/4 Mi South of Flippin Merion Co.
Route 101 Section 2
ARKANSAS STATE HIGHWAY DEPARTMENT
LITTLE ROCK

N.B. Garner
Bridge Engineer

Designed By Jem
Traced By Jem
Checked By Jem
Scale 3/8" = 1'-0"

Rev. 302 10-25-42

Bridge No. 477

Drawn by 405